



North Andrews Gardens
Panther Prints



“Where EXCELLENCE IS EXPECTED !!”

Setting the Standard for Excellence in Academics as well as the
Visual and Performing Arts

Happy New Year Panthers!

A **HUGE Panther ROAR** to our students, teachers & parents

for the hard work that went into maintaining our **“B”!**

We are 2 points from the “A”, our 2019-2020 GOAL!

Theme: **The BEST is Yet to Come...Life, Liberty and the
Pursuit of Goals!**



Principal Duhart

Upcoming Calendar Events

- August 13 Meet and Greet K-2 2pm-2:45pm
Meet and Greet 3-5 3:15pm – 4pm
- **August 14 First Day of School**
- September 2 No School/Happy Labor Day
- September 13 Interims Go Home
- September 30 No School
- September 12 Fall Picture Day
- October 17 Early Release Day – Student dismissal 1 pm
- October 18 Teacher Planning/No School for Students



North Andrews Gardens
Panther Prints



Please remember,
for the safety of our
students, that there
is no cell phone use
in the car loop.



Breakfast is served
beginning at 7:45 am
each morning. Only
students who are eating
breakfast may arrive to
school prior to 8am.
Those students must go
directly to the cafeteria.

We stop serving
breakfast at 8:20am.
Breakfast is **free** to all
students.

Lunch: \$2.00

Ice Cream: \$0.65 W/F

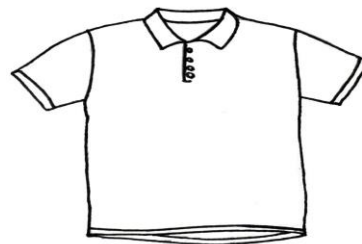
North Andrews Gardens
Elementary is a Unified Dress
school. Please adhere to the
guidelines below:

Collared, Button down “Polo”
shirts in **Red**, **White** or **Navy Blue**.
Solid colors only.

Bottoms(shorts, pants, capris,
skorts, skirts and dresses) in
Khaki or **Navy Blue**.

Please **NO** sweatpants, athletic
shorts, denim or stretch legging
pants are allowed.

Closed toed shoes must also be
worn every day.



Sunshine Aftercare Program

954-236-8850

On-site 3-6pm Daily



North Andrews Gardens
Panther Prints



Arrival and Dismissal

School hours are from 8:30am-3:00pm. Students should not be on campus prior to 8:00 as there is no supervision at this time. Students are welcome to arrive in the cafeteria at 7:45 when breakfast begins. Late arrivals(after 8:30am) must be signed in by the parent in the front office. Dismissal is at 3:00, parents are expected to pick their children up on time every day.



Want to reduce your time waiting in the car loop for arrival and dismissal?

Follow these helpful hints so that our staff can facilitate a quick and orderly car rider dismissal:

- Pull down as far as you possibly can so that the entire car loop can be used to accommodate traffic.
- Stay off your cell phone and stay alert.
- Have your **car sign** posted with your child's name and grade listed clearly.
- Have your child enter your vehicle on the passenger side.



INDEPENDENCE
Day

Students will be walking to class independently beginning Friday, August 16, 2019.

Parents are invited to review the Code of Student Conduct Handbook and complete the required forms by accessing the Back to School Forms link found on the Broward Schools' webpage at:

<https://www.browardschools.com/backtoschool-onlineforms>



Visit our website often for important information and updates.



North Andrews Gardens
Panther Prints



Early Dismissal/Sign-out

According to School Board Policy, students are not permitted to be picked up 30 minutes prior to the end of the school day. The last 30 minutes are a critical part of the school day. Students will not be dismissed after 2:30pm until the bell rings at 3:00pm.

Teachers are conducting final lesson reviews, passing out important papers and giving homework assignments. We thank you in advance for your cooperation with this matter.

Please join our wonderful PTA!!

Flyers to join were included in your first day packets and copies can be obtained in the front office if necessary.



New Panther Family Members

Kelly Hubert	ESE Specialist
Evans Jean	Science Specials
Nina Menolascino	Grade 3
Amy Lautenschlager	ESE Support Facilitator
Charlotte Tobin	Grade 1
Charlissea Austin	Campus Monitor



North Andrews Gardens
Panther Prints



Safety and Security



- ✓ Student drop-off: Students may not be dropped off in the car loop after 8:30am.
- ✓ Perimeter gates will be locked at 8:30am.
- ✓ Community must call the front office to gain entrance once the school day has begun. (754-322-7300)
- ✓ Front office will be locked at **ALL** times.
Please ring the bell for entrance.

Reminders for N.A.G.E

- ✚ Students will have a tag on their backpacks that indicate how they will be getting home on a routine basis. Please leave the tag on your child's backpack.
- ✚ Students must wear their ID badges at all times.
- ✚ Each student will be bringing home a **"Red Folder"** on Wednesdays of every week. These folders will contain graded work from the teacher and any important news and flyers for parents to review. Please sign the paper inside the folder and return it to your child's teacher the following day. Be sure to check your child's backpack at least every Wednesday so you do miss any important information 😊



North Andrews Gardens
Panther Prints



If you are a returning volunteer the application will carry over from last year.



All new Kindergarten parents will need to fill out an application unless a sibling attends NAGE.

Become an approved volunteer by completing the application at:

www.getinvolvedineducation.com/parents

WHY DOES ATTENDANCE MATTER?

If children don't show up for school regularly, they miss out on fundamental reading and math skills and the chance to build a habit of good attendance that will carry them into college and careers. Preliminary data from a California study found that children who were chronically absent in kindergarten and 1st grade were far less likely to read proficiently at the end of 3rd grade.

Did you know?

- Only 43% of students with at-risk attendance (missing 9 or more days) were likely to read proficiently at the end of 3rd grade.
- Only 41% of students who were chronically absent in Kindergarten or First Grade (18 or more days missed) were likely to read proficiently at the end of 3rd grade.
- Only 17% of students who were chronically absent in Kindergarten and First Grade (18 or more days missed) were likely to read proficiently at the end of 3rd grade.